

## 用于离岸起重机的监测和控制系统 关节臂起重机 - 桁架臂起重机

### AHC - 主动波浪补偿

通过对船只运动的主动控制补偿，延长起重机的作业时间，使用安装在起重机座上的运动参考单元（MRU）。

### AHC - 主动张力控制

用于安全展开通过飞溅区和下降至海底。

### CT - 恒张力控制

控制绞车拉力，把负载安全装卸于供应船和从海底提升。

### AOPS - 自动过载保护

在严重超载的情况下，控制绞车的最大拉力，避免损坏起重机。

### 区域控制

根据起重机臂的半径，限制起重机在某些区域作业。

### 用户友好

图解和操作是与有经验的起重机司机共同开发的。

### 数据记录仪

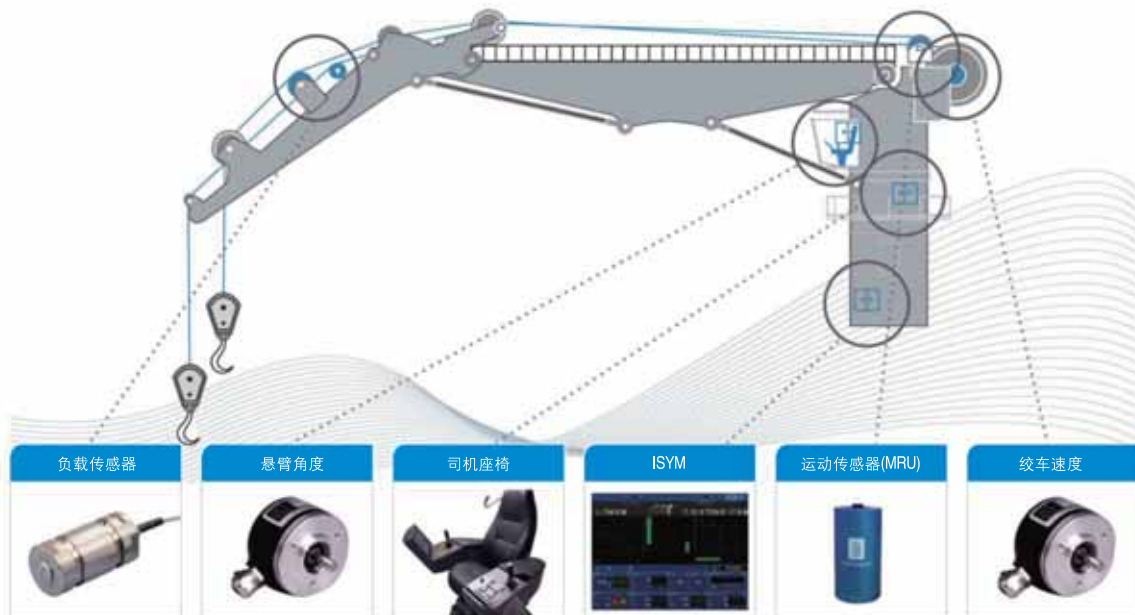
简单访问历史数据，使你能够监测情况是如何发生的，或者分析以前的记录。

### 危险区域

传感器和激励器可以在区域1和区域2作业。

### 起重机控制器

安全和有效地控制回转、悬臂和吊钩的运动。



## 动态负载控制器

### AHC - 主动波浪补偿

主动波浪补偿过滤出船只的运动，并且使得有可能在恶劣的气候中延长起重机的作业时间，在提升、下降负载时，以及在保持负载处于固定位置时，主动波浪补偿能够起作用。图中显示当负载下降至155米深的海底时，绞车的运动。



### AHC - 操作者显示

iSYM AHC是基于绞车的动态实时模块，它是连续更新负载数据和海况，系统计算出要求用于补偿当前船只运动的起重机功率的百分数，起重机驾驶员能够使用这个数值去监测主动波浪补偿的性能，或者在开始提升前去预测主动波浪补偿的性能。右图显示使用50%的主动波浪补偿功率去补偿当前船只的运动。



### ATC - 主动张力控制

新的改进的控制功能，用于把负载安全地下降至海底，和用于展开负载通过飞溅区。

### CT - 恒张力

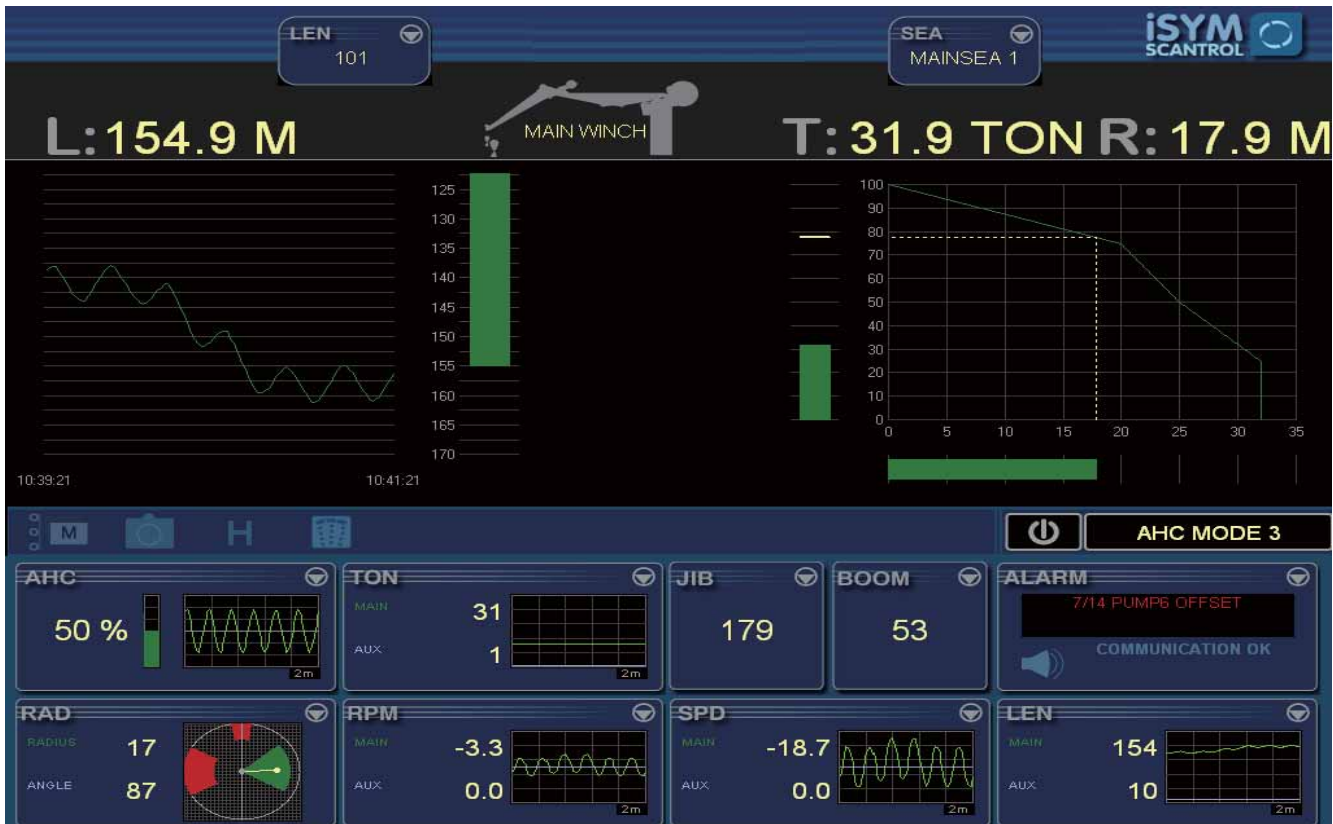
控制绞车从供应船提起负载和把负载抬高海底。

有关解决方案, 产品详情, 请联系:

动力技术(中国)有限公司  
香港九龙荔枝角长顺街5号  
长江工厂大厦5楼C室  
电话: 852-2612-0482 / 2612-0481  
传真: 852-2612-2483

上海德林动力设备有限公司  
上海市平江路139号, 3楼310室  
邮编: 200032  
电话: 86-21-5039-3068 / 5039-3078  
传真: 86-21-5039-3038

大连办事处  
地址: 大连市高新区七贤路92号1-2室  
邮编: 116023  
电话: 0411-8479-0785  
传真: 0411-8479-0785



## Monitoring and control system for offshore cranes

### Knuckle boom cranes – Lattice boom cranes

#### AHC - Active Heave Compensation

Increase crane operation time by active control to compensate for vessel movement. Uses Motion Reference Unit (MRU) mounted in crane pedestal

#### ACT - ActiveTension Control

For safe deployment through the splash zone and landing on the seabed

#### CT - Constant Tension Control

Control of winch pull for safe load handling on supply vessels and liftoff from the seabed

#### AOPS Automatic Overload Protection

Controls maximum winch pull to avoid damage to the crane in severe overload situations

#### SectorControl

Limitation of crane operations in certain sectors, depending on boom radius

#### Crane Controls

Safe and efficient control of slew, boom and hook motions

#### User Friendly

Graphics and operations are developed together with experienced crane operators

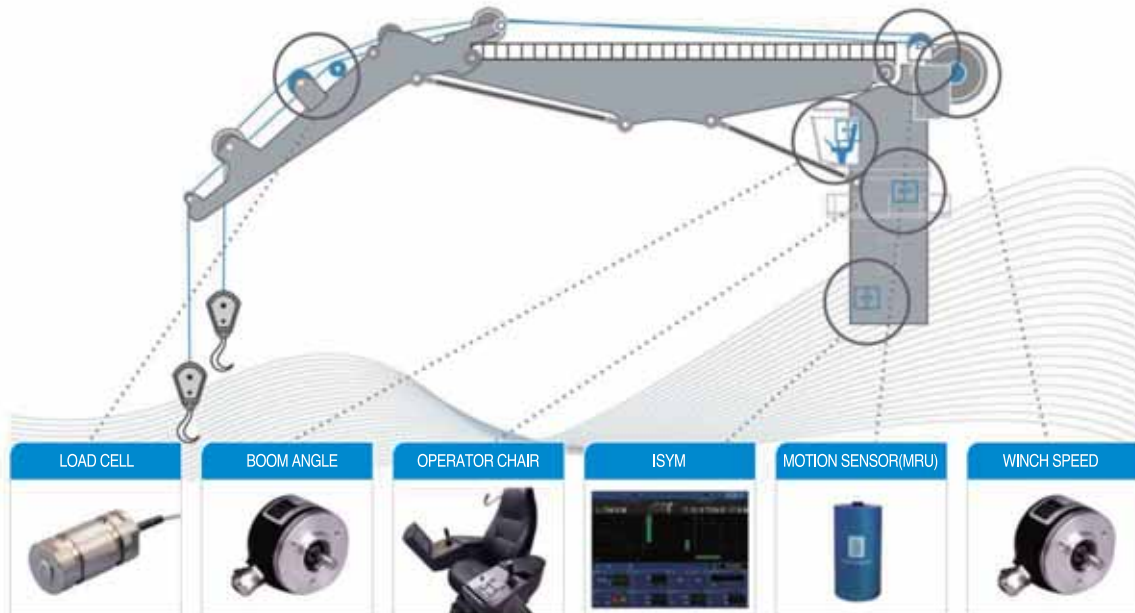
#### Data Logger

Simple access to historical data to let you monitor how a situation develops, or analyse previous recordings

#### Hazardous Area

Sensors and activators available for Zone1 and Zone2 operation





## Dynamic Load Controls

### AHC - Active Heave Compensation

AHC filters out vessel movement and makes it possible to increase the operation time of the crane in bad weather conditions. AHC can be active when heaving and lowering the load, and when keeping it in a fixed position. The graph shows the winch movement when lowering a load to the seabed at 155 meter depth.



### AHC - Operator Display

iSYM AHC is based on a dynamic real-time model of the crane that is constantly updated with load data and sea conditions. The system calculates the percentage of the cranes capacity that is required to compensate for the current vessel movement. The crane driver can use this number to monitor AHC performance or to predict AHC performance before starting the lift.

The picture to the right shows that 50% of the AHC capacity is used to compensate for current vessel movement.



### ATC - Active Tension Control

New improved control function for safe landing of loads on the seabed, and for deploying loads through the splash zone.

### CT - Constant Tension

Control of winch pull to pickup loads from supply vessels and lifting loads off the seabed

For Solutions and Details of Product , Please Contact:

POWERTECH (CHINA) LTD.  
Unit C, 5/F, 5 Cheung Shun Street,  
Lai Chi Kok, Kolwoon, Hong Kong  
Tel: 852-2612-0482 /2612-0481  
Fax:852-2612-2483

SHANGHAI POWERTECH EQUIP. LTD.,  
Room 310, 3/F., 139 Pingjiang Road,  
Shanghai, China P.C.200032  
Tel: 86-21-5039-3068/5039-3078  
Fax:86-21-5039-3038

DALIAN OFFICE  
Room 1-2, No.92, Qixian Road, High-tech District,  
Dalian City, Liaoning Province, China  
P.C. 116023  
Tel: 0411-8479-0785 Fax: 0411-8479-0785