

船舶工业、海事工程优先选择液压产品

The Marine Industry's Preferred Hydraulics



公司简介:

动力技术（中国）有限公司为一专业液压驱动与控制系统工程公司。为造船工业，工程船舶及海洋工程用户提供尖端技术的解决方案及完善的售后服务。选用的产品包括挪威SCANTROL监测捕获技术及控制、挪威HYDRANOR绞车操作比例阀、挪威PMC深海作业技术方案、日本/英国KAWASAKI油泵、英国STAFFA马达、德国LEBUS®卷筒、德国HUNGER油缸、德国LINDE闭环回路柱塞单元及美国FAIRFIELD顶升驱动装置等国际著名品牌的高质可靠设备。

各生产厂家通过其世界各地的销售服务网络提供全球性服务。

Company Profile:

Powertech (China) Ltd., is a leading system and engineering company providing "STATE OF THE ART" solutions and comprehensive after-sales services of hydraulic drives and controls for customers in the marine, off-shore and shipbuilding industry. Our solutions are delivered with distinguished, high quality and most reliable makes such as SCANTROL catching technology products, HYDRANOR proportional winch control blocks, PMC off-shore solutions, KAWASAKI pumps, STAFFA motors, LEBUS® grooved drums, HUNGER cylinders, LINDE close-loop piston units and FAIRFIELD jack up drives.

World wide service is available through the respective manufacturer's global sales and service net-work.

动力技术精神 Spirit of Powertech

仅为你提供卓越的解决方案, 高质量的产品和及时的服务
Providing Only The Best Solutions, Products and Services

Swash Plate Type Axial Piston Pumps (diesel engine driven)

K3V Series 系列变量柱塞泵(柴油机驱动)

■ Specifications 规格



系列 Size		63	112	140	180	280
排量 Displacement(cm³)		63	112	140	180	280
压力 Pressure (Mpa)	* 1 额定 Rated	34.3				
	峰值 Peak	39.2				
转速 Speed (min-1)	* 2 自吸最高 Max.for self priming	2,650	2,360	2,150	1,950 (2,200)*4	1,600 (2,000)*4
	* 3 最高 Max.	3,250	2,700	2,500	2,300	2,000
最大输入扭矩(串联泵) (N.m) Max.input torque of tandem pump		343	588	1,120	1,120	1,950
质量 Mass (kg)	单泵 Single	48	68	86	86	140
	串联泵 Tandem	81	125	160	160	270

Swash Plate Type Axial Piston Pumps (electric motor driven)

K3VG Series 系列变量柱塞泵(电机驱动)

■ Specifications 规格



尺寸 / Size		63	112	180	280	180DT	280DT
排量 / Displacement cm³		63	112	180	280	180DT	280DT
压力 Pressure Mpa(kgf/cm²)	额定 Rated*1	34.3 (350)					
	最高 Max.	34.3 (350)					
	峰值 Peak	39.2 (400)					
转速 Speed (min-1)	额定 Rated*1	1,800		1,200		1,800	1,200
	自吸最高*2 Max.for self -priming	2,650	2,200	1,850	1,600	1,850	1,600
	最高 Max.*3	3,250	3,700	2,300	2,000	2,300	2,000
质量 / Mass kg		343	68	86	160	160	300

- * 1、指确保性能、功能、寿命的压力值，不是强度极限，而是轴承寿命的极限。
- * 2、指标准泵在斜盘倾角最大时的临界转速。柴油机驱动时，空转的转速值必须低于该值。在泵吸入口处，请保证-0.01MPa以上的压力值。
- * 3、在吸入口处的压力必须大于0.1MPa。
- * 4、带离心泵时的最大转速。
- * 5、当使用其它液压油时，请务必和我们商谈。

Pressure to which guarantee of performance, functions or service life is applied durability is unlimited (except for the bearing life)
At max.displacement. In case of engine driving, max. idling speed should be below this value.
This suction pressure should be >0.01MPa and above
Max.speed with centrifugal pump
When other kinds of fluid would be used, please consult with us.

Swash Plate Type Axial Piston Pumps (electric motor driven)

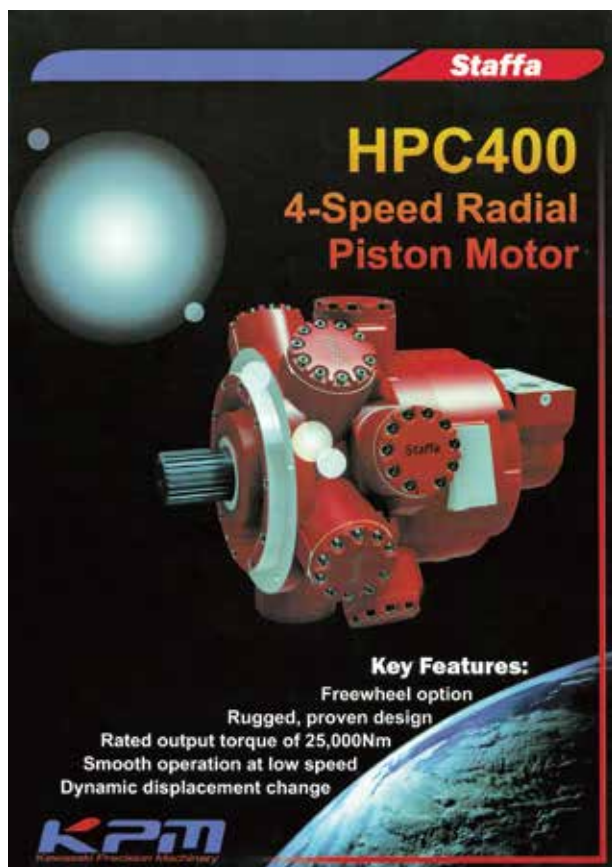
K3VL Series 系列变量柱塞泵(电机驱动)

■ Specifications 规格



型号 / Model Code		K3VL28	K3VL45	K3VL60	K3VL80	K3VL112	K3VL140	K3VL200	
排量 / Displacement cm³		28	45	60	80	112	140	200	
压力 Pressure Mpa(kgf/cm²)	额定 Rated	32 (326)							350
	峰值 Peak	35 (357)							400
转速 Speed (Min-1)	自吸最高*1 Max.for self -priming	3,000	2,700	2,400	2,400	2,200	2,200	1,900	
	最高 Max.*2	3,600	3,250	3,000	3,000	2,700	2,500	2,200	
质量 / Mass kg		20	25	25	35	65	65	100	





HPC 400 四速马达主要特征:

- 可选自由轮工况
- 坚固成熟的设计
- 额定输出扭矩25000Nm
- 平稳的低速运转
- 动态设换大小排量
- 轴最大输出430千瓦
- 可承受较高的背压

High Torque Low Speed Radial Piston Motor (Fix Displacement)

HMB Series 系列低速大扭矩径向柱塞马达(定量)

英国 **Staffa**

Specifications 规格



Motor Type	Geometric Displacement (cc/rcv)	Average Actual Running Torque (Nm/bar)	Rated Continuous Speed(rev/min)	Rated Continuous Output(kw)	Rated Continuous Pressure(bar)	Max. Intermittent Pressure(bar)
B045	740	10.95	060	60	060	300
B060	983	14.5	300	80	250	300
B080	060	19.9	300	100	250	300
B100	1639	24.3	250	110	250	300
B125	2050	30.66	220	100	250	300
B150	2470	36.95	220	115	250	300
B200	3080	46.07	175	130	250	300
B270	4310	63.79	125	140	250	300
B325	5310	79.4	100	140	250	300
B400	6800	101	120	190	250	300

High Torque Low Speed Radial Piston Motor

HPC (HMC) Series 系列低速大扭矩径向柱塞双速马达

英国 **Staffa**

Specifications 规格

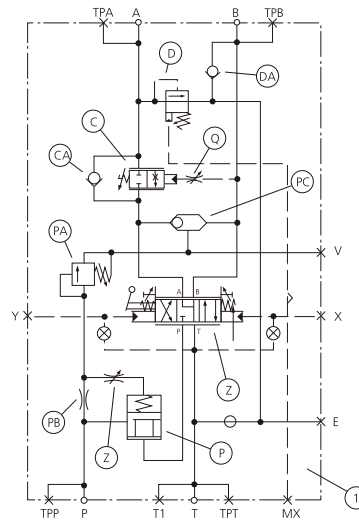


Models	Displacement cm/rev	Rated Torque Nm	Continuous Ratings			Max. Intermittent
			Speed r/min	Power kw	Pressure bar	
C045	High 737 Low 327	2662 1100	450	99	250	300
			600	79		
C080	High 492 Low 737	5505 2650	300	138	250	300
			600	99		
C125	High 2048 Low 988	7475 3200	190	135	250	300
			390	81		
C200	High 3080 Low 1470	11650 5250	155	174	250	300
			260	105		
C270	High 4588 Low 1310	17350 4275	120	189	250	300
			350	73		
C325	High 5326 Low 1557	20100 5225	100	189	250	300
			350	85		
*C400	High 6555 Low 164	25000 3.6	220 630	430 20	250	300

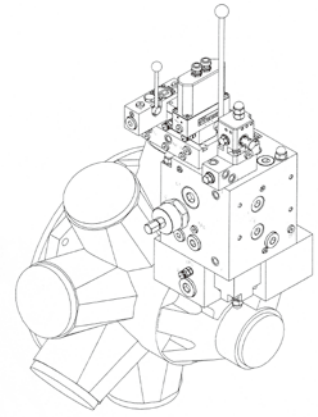
*4 速马达 注: 所有双速马达可选自由轮工况。

*4 speed motor Note: Free-wheeling available on all two speed motor.

SERVI HYDRANOR AS 绞车比例操作阀一览表



6MB型单元液压原理图（远程操作及机傍控制式）



Blocks For Variable Pumps 变量泵并联系统比例操作阀								
features 功能说明			6MB WBV4	6MB WBV4	6MB WBV4	6MB WBV5	6MB WBV5	6MB WBV5
Capacity Flow l/min			450	650	800	950	1200	1500
Working Pressure, bar			350	350	350	350	350	350
Design Pressure, bar			350	350	350	350	350	350
Pump System			VARIABLE	VARIABLE	VARIABLE	VARIABLE	VARIABLE	VARIABLE
Tension/mooring			YES	YES	YES	YES	YES	YES
Subplate motor assy			YES	YES	YES	YES	YES	YES
Control of spool	Manual		YES	YES	YES	YES	YES	YES
	Remote		YES	YES	YES	YES	YES	YES
Topplate multifunction			YES	YES	YES	YES	YES	YES
	Reduced pressure		YES	YES	YES	YES	YES	YES
	Electrical valves, Eex (ATEX)		YES	YES	YES	YES	YES	YES
Brake valve	Direct spool operated		YES	YES	YES	YES	YES	YES
Weight	kg		96	96	96	433	433	455
Ports	P	SAE 6000	1 1/2"	1 1/2"	1 1/2"	2"	2"	2"
	T	SAE 3000	2"	2"	2"	2 1/2"	2 1/2"	2 1/2"
	A/B	SAE 6000	1 1/2"	1 1/2"	1 1/2"	2"	2"	2"

Blocks For Fix Pumps 定量泵串联系统比例操作阀								
features 功能说明			8MBA WBF2	8MBA WBF2	8MBA WBF2	6MBA WBF3	6MBA WBF4	6MBA WBF4
Capacity Flow l/min			70	140	200	320	450	650
Working Pressure, bar			350	350	350	350	350	350
Design Pressure, bar			350	350	350	350	350	350
Pump System			FIXED	FIXED	FIXED	FIXED	FIXED	FIXED
Tension/mooring			25	25	25	25	35	35
Subplate motor assy			YES	YES	YES	YES	YES	YES
Control of spool	Manual		YES	YES	YES	YES	YES	YES
	Remote		YES	YES	YES	YES	YES	YES
Topplate multifunction			YES	YES	YES	YES	YES	YES
	Reduced pressure		YES	YES	YES	YES	YES	YES
	Electrical valves, Eex (ATEX)		YES	YES	YES	YES	YES	YES
Brake valve	Direct spool operated		YES	YES	YES	YES	YES	YES
Weight	kg		32	32	32	56	96	96
Ports	P	SAE 6000	3/4"	3/4"	3/4"	1"	1 1/2"	1 1/2"
	T	SAE 3000	1"	1"	1"	1 1/4"	2"	2"
	A/B	SAE 6000	1/2"	1/2"	1/2"	1"	1 1/2"	1 1/2"

Piling Barge Series 打桩船系列

Specifications 规格



Bore mm 缸径	650	700	760	800	900	950	1000	1200
Rod ø mm 活塞杆直径	360	400	450	500	540	560	650	700
行程 Stroke mm	由用户选定							
Rated Pressure (Bar) 额定压力(巴)	250							
Test Pressure (Bar) 试验压力(巴)	375							

- Stroke: is up to 30 meters depending on size and application
- Piston rod with ceraplate or PTA plasma welding coating
- 行程: 按油缸大小及应用工况, 行程达30米
- 活塞杆: 陶瓷或等离子粉末焊接涂层

注: 油缸规格、安装型式按用户要求供货

Split Barge Series 开体泥驳系列

Specifications 规格

选择液压缸参考数据



	液压缸尺寸...			拉力	安装功率
	缸内径	活杆缸直径	行程		
300m3	280mm	140mm	1800mm	115 /缸	7.5kw
	320mm	160mm	2000mm	150 /缸	
500m3	360mm	180mm	2200mm	190 /缸	15kw
	400mm	200mm	2400mm	235 /缸	
1000m3	450mm	220mm	2600mm	300 /缸	22kw
	500mm	250mm	2800mm	365 /缸	
1250m3	500mm	250mm	2800mm	365 /缸	30kw
	560mm	280mm	3000mm	450 /缸	
1500m3	630mm	300mm	3300mm	600 /缸	37.5kw
3000m3	760mm	360mm	3600mm	880 /缸	55kw

注: 拉力按工作压力250bar计算,而最高许用压力为320bar。安装功率是按开底时间约为1分钟和关底时间约为3分钟计算。

波浪补偿储能器



波浪补偿高速油缸



深海作业油缸



动力技术（中国）有限公司 上海德林动力设备有限公司

动力技术（中国）有限公司
香港九龙荔枝角长顺街5号
长江工厂大厦5楼C室
电话：852-2612-0482 / 2612-0481
传真：852-2612-2483

上海德林动力设备有限公司
上海市浦东新区东方路710号汤臣金融大厦316室
邮编：200122
电话：86-21-5039-3068 / 5039-3078
传真：86-21-5039-3038

广州办事处
地址：广州市荔湾区中山七路65号912室（富护中心）
电话：020-8174-9152
传真：020-8173-4780

武汉办事处
武汉华昌强液压有限公司
地址：武汉市洪山区珞狮路205号武汉理工大学
（余家头校区）液压实验楼
电话：027-8655-8744
传真：027-8656-3363

大连办事处
大连远东永昌自动化工程有限公司
地址：辽宁省普兰店市铁西办事处农场社区
电话：0411-8312-7811
传真：0411-8313-9011

POWERTECH (CHINA) LTD. SHANGHAI POWERTECH EQUIP. LTD.

POWERTECH (CHINA) LTD.
Flat C, 5/F,
Cheung Kong Factory Bldg,
5 Cheung Shun Street,
Lai Chi Kok, Kowloon,
Hong Kong
Tel: 852-2612-0482 / 2612-0481
Fax: 852-2612-2483

SHANGHAI POWERTECH EQUIP. LTD.
Rm.316,3/F., Tomson Financial Building,710 DongFang Road,
Pudong, Shanghai, China P.C.200122
Tel: 86-21-5039-3068 / 5039-3078
Fax: 86-21-5039-3038

GUANGZHOU OFFICE
Room 912, 65 Zhongshan 7th Road, Liwan, Guangzhou
Tel: 020-8174-9152
Fax: 020-8173-4780

WUHAN OFFICE
Wuhan Huachangqiang Hydraulic Co., Ltd.
Hydraulics Laboratory, Yujiatou Campus
Of Wuhan University of Technology,
205 Luoshi Road, Hongshan, Wuhan
Tel: 027-8655-8744
Fax: 027-8656-3363

DALIAN OFFICE
Dalian Yuandong Yongchang Automation Engineering
Farm Community, Tiexi Office, Pulandian, Liaoning
Tel: 0411-8312-7811
Fax: 0411-8313-9011